

DUCT CODE

DESCRIPTIONS

CPG-202



UPRIGHT GASTRONORM REFRIGERATOR - 2 FULL DOORS

Stainless steel exterior and interior body,
Patented aesthetic design,
Wide internal volume,
All doors with anti drop heating elements,
Unbreakable Zamak door hinges,
Self closing doors which can be free standing at 45°,
"Ozone friendly" polyurethane insulation (60 mm thickness),
Plastic coated adjustable interior shelves,
Energy saving high insulated body with 40 kg/m³ density,
CFC free, R-134 A refrigerant gas,
Ventilated, removable compressor,
Gas condensation container,
Cooling with fan,
Bottom located, high efficient cooling unit,
Unoxidized, antibacterial painted, evaporator with copper pipe and aluminum panel,
Stainless steel evaporator panel,
Operating temperature between -2°C and +8°C (43°C tropical),
Electronically controlled temperature and defrost indicator,
Curved interior bottom body,
Capacity, 2/1 GN tray
Interior Volume (lt):1400
Power (W):341
Voltage (V):220/240 V - I - 50/60 Hz
Dimension (mm) :1380x830x2100

CPG-202-GD



UPRIGHT GASTRONORM REFRIGERATOR - 2 FULL GLASS DOORS

Stainless steel exterior and interior body,
Patented aesthetic design,
Wide internal volume,
All doors with anti drop heating elements,
Unbreakable Zamak door hinges,
Self closing doors which can be free standing at 45°,
"Ozone friendly" polyurethane insulation (60 mm thickness),
Plastic coated adjustable interior shelves,
Energy saving high insulated body with 40 kg/m³ density,
CFC free, R-134 A refrigerant gas,
Ventilated, removable compressor,
Gas condensation container,
Cooling with fan,
Bottom located, high efficient cooling unit,
Unoxidized, antibacterial painted, evaporator with copper pipe and aluminum panel,
Stainless steel evaporator panel,
Operating temperature between -2°C and +8°C (43°C tropical),
Electronically controlled temperature and defrost indicator,
Curved interior bottom body,
Capacity, 2/1 GN tray
Interior Volume (lt):1400
Power (W):341
Voltage (V):220/240 V - I - 50/60 Hz
Dimension (mm) :1380x830x2100

Operating temperature between -2°C and +8°C (43°C tropical),
 Electronically controlled temperature and defrost indicator,
 Curved interior bottom body,
 Capacity, 2/1 GN tray
 Interior Volume (lt):1400
 Power (W):341
 Voltage (V):220/240 V - I - 50/60 Hz
 Dimension (mm) :1400x810x2100

CPG-202-UC**UPRIGHT GASTRONORM REFRIGERATOR - 2 FULL DOORS, COMPRESSOR UP**

Stainless steel exterior and interior body,
 Patented aesthetic design,
 Wide internal volume,
 All doors with anti drop heating elements,
 Unbreakable Zamak door hinges,
 Self closing doors which can be free standing at 45°,
 "Ozone friendly" polyurethane insulation (60 mm thickness),
 Plastic coated adjustable interior shelves,
 Energy saving high insulated body with 40 kg/m³ density,
 CFC free, R-134 A refrigerant gas,
 Ventilated, removable compressor,
 Gas condensation container,
 Cooling with fan,
 Compressor-up located
 Unoxidized, antibacterial painted, evaporator with copper pipe and aluminum panel,
 Stainless steel evaporator panel,
 Operating temperature between -2°C and +8°C (43°C tropical),
 Electronically controlled temperature and defrost indicator,
 Curved interior bottom body,
 Capacity, 2/1 GN tray
 Interior Volume (lt):1400
 Power (W):341
 Voltage (V):220/240 V - I - 50/60 Hz
 Dimension (mm) :1320x810x2100

CPG-202-UCGD**UPRIGHT GASTRONORM REFRIGERATOR - 2 FULL GLASS DOORS, COMPRESSOR UP**

Stainless steel exterior and interior body,
 Patented aesthetic design,
 Wide internal volume,
 All doors with anti drop heating elements,
 Unbreakable Zamak door hinges,
 Self closing doors which can be free standing at 45°,
 "Ozone friendly" polyurethane insulation (60 mm thickness),
 Plastic coated adjustable interior shelves,
 Energy saving high insulated body with 40 kg/m³ density,
 CFC free, R-134 A refrigerant gas,
 Ventilated, removable compressor,
 Gas condensation container,
 Cooling with fan,
 Compressor-up located

IND ENDÜSTRİYEL DAY. TÜK. ÜRÜNLERİ SAN. TIC. A.Ş.
 Akıncılar, İsrailbulvarı, Beşiktaş, Organize Sanayi Bölgesi, Marmara Çiftliği, No:134, 34530 Tuzla / İstanbul / Türkiye
 Tel: +90 216 593 02 42 / Fax: +90 216 593 02 43

Operating temperature between -2°C and +8°C (43°C tropical),
 Electronically controlled temperature and defrost indicator,
 Curved interior bottom body,
 Capacity, 2/1 GN tray
 Interior Volume (lt):1400
 Power (W):341
 Voltage (V):220/240 V - I - 50/60 Hz
 Dimension (mm) :1320x810x2100 2

CPG-101**UPRIGHT GASTRONORM REFRIGERATOR - 1 FULL DOOR**

Stainless steel exterior and interior body,
 Patented aesthetic design,
 Wide internal volume,
 All doors with anti drop heating elements,
 Unbreakable Zamak door hinges,
 Self closing doors which can be free standing at 45°,
 "Ozone friendly" polyurethane insulation (60 mm thickness),
 Plastic coated adjustable interior shelves,
 Energy saving high insulated body with 40 kg/m³ density,
 CFC free, R-134 A refrigerant gas,
 Ventilated, removable compressor,
 Gas condensation container,
 Cooling with fan,
 Bottom located, high efficient cooling unit,
 Unoxidized, antibacterial painted, evaporator with copper pipe and aluminum panel,
 Stainless steel evaporator panel,
 Operating temperature between -2°C and +8°C (43°C tropical),
 Electronically controlled temperature and defrost indicator,
 Curved interior bottom body,
 Capacity, 2/1 GN tray
 Interior Volume (lt):700
 Power (W):208
 Voltage (V):220/240 V - I - 50/60 Hz
 Dimension (mm) :680x830x2100

CPG-101-GD**UPRIGHT GASTRONORM REFRIGERATOR - 1 FULL GLASS DOOR**

Stainless steel exterior and interior body,
 Patented aesthetic design,
 Wide internal volume,
 All doors with anti drop heating elements,
 NO ENDÜSTRİYEL DAY. TÜK. ÜRÜNLERİ SAN. TIC. A.Ş.
 Ayarlı Mutfak İstanbul Anadolu Yakası Org.San.Böl. Mermerciler Cad. No:41 34953 Tuzla – İstanbul / Türkiye
 Tel: +90 216 593 02 42 / Fax: +90 216 593 02 43



Unbreakable Zamak door hinges,
Self closing doors which can be free standing at 45°,
"Ozone friendly" polyurethane insulation (60 mm thickness),
Plastic coated adjustable interior shelves,
Energy saving high insulated body with 40 kg/m³ density,
CFC free, R-134 A refrigerant gas,
Ventilated, removable compressor,
Gas condensation container,
Cooling with fan,
Bottom located, high efficient cooling unit,
Unoxidized, antibacterial painted, evaporator with copper pipe and aluminum panel,
Stainless steel evaporator panel,
Operating temperature between -2°C and +8°C (43°C tropical),
Electronically controlled temperature and defrost indicator,
Curved interior bottom body,
Capacity, 2/1 GN tray
Interior Volume (lt):700
Power (W):208
Voltage (V):220/240 V - I - 50/60 Hz
Dimension (mm) :680x830x2100

CPS-202-UCGD**UPRIGHT 2 MODUL SNACK REFRIGERATOR - 2 FULL GLASS DOORS, COMPRESSOR UP**

Stainless steel exterior and interior body,
Patented aesthetic design,
Wide internal volume,
All doors with anti drop heating elements,
Unbreakable Zamak door hinges,
Self closing doors which can be free standing at 45°,
"Ozone friendly" polyurethane insulation (60 mm thickness),
Plastic coated adjustable interior shelves,
Energy saving high insulated body with 40 kg/m³ density,
CFC free, R-134 A refrigerant gas,
Ventilated, removable compressor,
Gas condensation container,

Cooling with fan,
Compressor-up located
Unoxidized, antibacterial painted, evaporator with copper pipe and aluminum panel,
Stainless steel evaporator panel,
Operating temperature between -2°C and +8°C (43°C tropical),
Electronically controlled temperature and defrost indicator,
Curved interior bottom body,
Interior Volume (lt):1200
Power (W):341
Voltage (V):220/240 V - I - 50/60 Hz
Dimension (mm) :1400x710x2100

TPS-62**COUNTER TYPE 2-DOORS SNACK REFRIGERATOR**

Stainless steel exterior and interior body,
Curved top plate with 6 cm backsplash,
Patented aesthetic design,
Wide internal volume,
All doors with anti drop heating elements,
Unbreakable Zamak door hinges,
Self closing doors which can be free standing at 45°,
"Ozone friendly" polyurethane insulation (60 mm thickness),
Plastic coated adjustable interior shelves,
Energy saving high insulated body with 40 kg/m³ density,
CFC free, R-134 A refrigerant gas,
Ventilated, removable compressor,
Gas condensation container,
Cooling with fan,
Compressor-up located
Unoxidized, antibacterial painted, evaporator with copper pipe and aluminum panel,
Stainless steel evaporator panel,
Operating temperature between -2°C and +8°C (43°C tropical),
Electronically controlled temperature and defrost indicator,
Curved interior bottom body,
Interior Volume (lt):1200
Power (W):341
Voltage (V):220/240 V - I - 50/60 Hz
Dimension (mm) :1400x710x2100

NOFAS İNSTRİYEL DAY. TÜK. ÜRÜNLERİ SAN. TIC. A.Ş.
Seydi Mah. İstanbul Anadolu Yakası Çarşı Çarşısı, Merciler Cad. No:41 34953 Tuzla – İstanbul / Türkiye
Tel: +90 216 593 02 42 / Fax: +90 216 593 02 43

Plastic coated adjustable interior shelves,
 Energy saving high insulated body with 40 kg/m³ density,
 CFC free, R-134 A refrigerant gas,
 Ventilated, removable compressor,
 Gas condensation container,
 Cooling with fan,
 Unoxidized, antibacterial painted, evaporator with copper pipe and aluminum panel,
 Stainless steel evaporator panel,
 Operating temperature between -2°C and +8°C (43°C tropical),
 Electronically controlled temperature and defrost indicator,
 Curved interior bottom body,
 Interior Volume (lt):285
 Power (W):250
 Voltage (V):220/240 V - I - 50/60 Hz
 Dimension (mm) : 1490x600x850

SLT 7105-MT

SALADETTE 7105 COUNTER TYPE 2 DOORS GASTRONORM REFRIGERATOR WITH MARBLE TOP AND 1/4 GN

Stainless steel exterior and interior body,
 Patented aesthetic design,
 Wide internal volume,
 All doors with anti drop heating elements,
 Unbreakable Zamak door hinges,
 Self closing doors which can be free standing at 45°,
 "Ozone friendly" polyurethane insulation (50 mm thickness),
 Plastic coated adjustable interior shelves,
 Energy saving high insulated body with 40 kg/m³ density,
 CFC free, R-134 A refrigerant gas,
 Ventilated, removable compressor,
 Gas condensation container,
 Cooling with fan,
 Unoxidized, antibacterial painted, evaporator with copper pipe and aluminum panel,
 Stainless steel evaporator panel,
 Operating temperature between -2°C and +8°C (43°C tropical),
 Electronically controlled temperature and defrost indicator,
 Curved interior bottom body,
 Capacity, 1/1 GN tray
 Interior Volume (lt):260
 Power (W):275
 Voltage (V):220/240 V - I - 50/60 Hz
 Dimension (mm) : 1050x700x850

SLT 7105 SC

SALADETTE 7105 COUNTER TYPE 2 DOORS GASTRONORM REFRIGERATOR WITH STAINLESS STEEL COVER

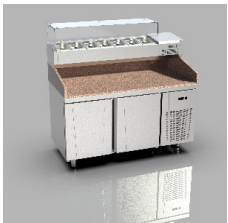
Stainless steel exterior and interior body,
 Patented aesthetic design,
 Wide internal volume,
 All doors with anti drop heating elements,
 Unbreakable Zamak door hinges,
 Self closing doors which can be free standing at 45°,
 "Ozone friendly" polyurethane insulation (50 mm thickness),
 Plastic coated adjustable interior shelves,
 Energy saving high insulated body with 40 kg/m³ density,

IND ENDÜSTRİYEL DAY TUK. ÜRÜNLERİ SAN. TIC. A.Ş.
 Aydınlı Mah. İstanbul Anadolu Yakası Org.San.Böl. Mermerciler Cad. No:41 34953 Tuzla – İstanbul / Türkiye
 Tel: +90 216 593 02 42 / Fax: +90 216 593 02 43

CFC free, R-134 A refrigerant gas,
 Ventilated, removable compressor,
 Gas condensation container,
 Cooling with fan,
 Unoxidized, antibacterial painted, evaporator with copper pipe and aluminum panel,
 Stainless steel evaporator panel,
 Operating temperature between -2°C and +8°C (43°C tropical),
 Electronically controlled temperature and defrost indicator,
 Curved interior bottom body,
 Capacity, 1/1 GN tray
 Interior Volume (lt):260
 Power (W):275
 Voltage (V):220/240 V - I - 50/60 Hz
 Dimension (mm) : 1050x700x850

CPS-202**UPRIGHT 2 MODUL SNACK REFRIGERATOR - 2 FULL DOORS**

Stainless steel exterior and interior body,
 Patented aesthetic design,
 Wide internal volume,
 All doors with anti drop heating elements,
 Unbreakable Zamak door hinges,
 Self closing doors which can be free standing at 45°,
 "Ozone friendly" polyurethane insulation (60 mm thickness),
 Plastic coated adjustable interior shelves,
 Energy saving high insulated body with 40 kg/m³ density,
 CFC free, R-134 A refrigerant gas,
 Ventilated, removable compressor,
 Gas condensation container,
 Cooling with fan,
 Bottom located, high efficient cooling unit,
 Unoxidized, antibacterial painted, evaporator with copper pipe and aluminum panel,
 Stainless steel evaporator panel,
 Operating temperature between -2°C and +8°C (43°C tropical),
 Electronically controlled temperature and defrost indicator,
 Curved interior bottom body,
 Interior Volume (lt):1200
 Power (W):341
 Voltage (V):220/240 V - I - 50/60 Hz
 Dimension (mm) :1400x710x2100
 Dimension (mm) :680x830x2100

TPG-72-MT3STTR**COUNTER TYPE MAKE-UP REFRIGERATOR - UPGRADED 3 SIDES MARBLE TABLE TOP**

Stainless steel exterior and interior body,
 Curved top plate with 6 cm backsplash,
 Patented aesthetic design,
 Wide internal volume,
 All doors with anti drop heating elements,
 Unbreakable Zamak door hinges,
 Self closing doors which can be free standing at 45°,
 "Ozone friendly" polyurethane insulation (60 mm thickness),
 Plastic coated adjustable interior shelves,
 Energy saving high insulated body with 40 kg/m³ density,
 CFC free, R-134 A refrigerant gas,
 Ventilated, removable compressor,
 Gas condensation container,
 Cooling with fan,
 Unoxidized, antibacterial painted, evaporator with copper pipe and aluminum panel,

IND ENDÜSTRİYEL DAY. TÜK. ÜRÜNLERİ SAN. TİC. A.Ş.

Aydınlı Mah. İstanbul Anadolu Yakası Org.San.Böl. Mermerciler Cad. No:41 34953 Tuzla – İstanbul / Türkiye

Tel: +90 216 593 02 42 / Fax: +90 216 593 02 43

Stainless steel evaporator panel,
Operating temperature between -2°C and +8°C (43°C tropical),
Electronically controlled temperature and defrost indicator,
Curved interior bottom body,
Capacity, 1/1 GN tray
Interior Volume (lt):345
Power (W):275
Voltage (V):220/240 V - I - 50/60 Hz
Dimension (mm) : 1500x700x850/1330

TPG-73**COUNTER TYPE 3-DOORS GASTRONORM REFRIGERATOR**

Stainless steel exterior and interior body,
Curved top plate with 6 cm backsplash,
Patented aesthetic design,
Wide internal volume,
All doors with anti drop heating elements,
Unbreakable Zamak door hinges,
Self closing doors which can be free standing at 45°,
"Ozone friendly" polyurethane insulation (60 mm thickness),
Plastic coated adjustable interior shelves,
Energy saving high insulated body with 40 kg/m³ density,
CFC free, R-134 A refrigerant gas,
Ventilated, removable compressor,
Gas condensation container,
Cooling with fan,
Unoxidized, antibacterial painted, evaporator with copper pipe and aluminum panel,
Stainless steel evaporator panel,
Operating temperature between -2°C and +8°C (43°C tropical),
Electronically controlled temperature and defrost indicator,
Curved interior bottom body,
Capacity, 1/1 GN tray
Interior Volume (lt):532
Power (W):310
Voltage (V):220/240 V - I - 50/60 Hz
Dimension (mm) : 2020x700x850

TPS-62-R**COUNTER TYPE 2-DOORS SNACK REFRIGERATOR REMOTE**

Stainless steel exterior and interior body,
Curved top plate with 6 cm backsplash,
Patented aesthetic design,
Wide internal volume,
All doors with anti drop heating elements,
Unbreakable Zamak door hinges,
Self closing doors which can be free standing at 45°,
"Ozone friendly" polyurethane insulation (60 mm thickness),
Plastic coated adjustable interior shelves,
Unoxidized, antibacterial painted, evaporator with copper pipe and aluminum panel,
Stainless steel evaporator panel,
Operating temperature between -2°C and +8°C (43°C tropical),
Electronically controlled temperature and defrost indicator,
Curved interior bottom body,
Interior Volume (lt):285
Voltage (V):220/240 V - I - 50/60 Hz
Dimension (mm) : 1240x600x850

TPG-74**COUNTER TYPE 4-DOORS GASTRONORM REFRIGERATOR**

Stainless steel exterior and interior body,
Curved top plate with 6 cm backsplash,
Patented aesthetic design,
Wide internal volume,
All doors with anti drop heating elements,
Unbreakable Zamak door hinges,
Self closing doors which can be free standing at 45°,
"Ozone friendly" polyurethane insulation (60 mm thickness),
Plastic coated adjustable interior shelves,
Unoxidized, antibacterial painted, evaporator with copper pipe and aluminum panel,
Stainless steel evaporator panel,
Operating temperature between -2°C and +8°C (43°C tropical),
Electronically controlled temperature and defrost indicator,
Curved interior bottom body,
Interior Volume (lt):345
Power (W):275
Voltage (V):220/240 V - I - 50/60 Hz
Dimension (mm) : 1500x700x850/1330

AND ENKÜSTÜRME GIDA VE BEZELERİ SAN. TİC. A.Ş.

Avdani Mah. İstanbul Anadolu Yakası Org.San.Böl. Mermerciler Cad. No:41 34953 Tuzla – İstanbul / Türkiye

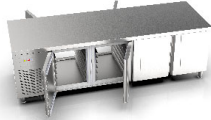
Tel: +90 216 593 02 42 / Fax: +90 216 593 02 43



All doors with anti drop heating elements,
Unbreakable Zamak door hinges,
Self closing doors which can be free standing at 45°,
"Ozone friendly" polyurethane insulation (60 mm thickness),
Plastic coated adjustable interior shelves,
Energy saving high insulated body with 40 kg/m³ density,

CFC free, R-134 A refrigerant gas,
Ventilated, removable compressor,
Gas condensation container,
Cooling with fan,
Unoxidized, antibacterial painted, evaporator with copper pipe and aluminum panel,
Stainless steel evaporator panel,
Operating temperature between -2°C and +8°C (43°C tropical),
Electronically controlled temperature and defrost indicator,
Curved interior bottom body,
Capacity, 1/1 GN tray
Interior Volume (lt):720
Power (W):375
Voltage (V):220/240 V - I - 50/60 Hz
Dimension (mm) : 2550x700x850

TPP-84-I



COUNTER TYPE PATISSERIE REFRIGERATOR ISLAND TYPE - 4 DOORS

Stainless steel exterior and interior body,
Curved top plate with 6 cm backsplash,
Patented aesthetic design,
Wide internal volume,
All drawers with anti drop heating elements,
Unbreakable Zamak door hinges,
Self closing doors which can be free standing at 45°,
"Ozone friendly" polyurethane insulation (60 mm thickness),
Plastic coated adjustable interior shelves,
Energy saving high insulated body with 40 kg/m³ density,
CFC free, R-134 A refrigerant gas,
Ventilated, removable compressor,
Gas condensation container,
Cooling with fan,
Unoxidized, antibacterial painted, evaporator with copper pipe and aluminum panel,
Stainless steel evaporator panel,
Operating temperature between -2°C - +8°C (43°C tropical),
Electronically controlled temperature and defrost indicator,
Curved interior bottom body,
Capacity:40x60 cm trays.
Interior Volume (lt):780
Power (W):460
Voltage (V):220/240 V - I - 50/60 Hz
Dimension (mm) : 2550x800x850

TPP-82-I



COUNTER TYPE PATISSERIE REFRIGERATOR ISLAND TYPE - 2 DOORS

Stainless steel exterior and interior body,
Curved top plate with 6 cm backsplash,
Patented aesthetic design,
Wide internal volume,
All drawers with anti drop heating elements,
Unbreakable Zamak door hinges,
Self closing doors which can be free standing at 45°,
"Ozone friendly" polyurethane insulation (60 mm thickness),
Plastic coated adjustable interior shelves,
Energy saving high insulated body with 40 kg/m³ density,
CFC free, R-134 A refrigerant gas,
Ventilated, removable compressor,
Gas condensation container,
Cooling with fan,
Unoxidized, antibacterial painted, evaporator with copper pipe and aluminum panel,
Stainless steel evaporator panel,
Operating temperature between -2°C - +8°C (43°C tropical),
Electronically controlled temperature and defrost indicator,
Curved interior bottom body,
Capacity:40x60 cm trays.
Interior Volume (lt):780
Power (W):460
Voltage (V):220/240 V - I - 50/60 Hz
Dimension (mm) : 2550x800x850

NOFAS İNŞAAT SANAYİ VE TİCARET A.Ş. İZMİR YOLU ÜST KATI
Seyhan Mah. İstanbul Anadolu Yakası Örg. San. Böl. Mer. Merciler Cad. No:41 34953 Tuzla – İstanbul / Türkiye
Tel: +90 216 593 02 42 / Fax: +90 216 593 02 43

Plastic coated adjustable interior shelves,
 Energy saving high insulated body with 40 kg/m³ density,
 CFC free, R-134 A refrigerant gas,
 Ventilated, removable compressor,
 Gas condensation container,
 Cooling with fan,
 Unoxidized, antibacterial painted, evaporator with copper pipe and aluminum panel,
 Stainless steel evaporator panel,
 Operating temperature between -2°C - +8°C (43°C tropical),
 Electronically controlled temperature and defrost indicator,
 Curved interior bottom body,
 Capacity:40x60 cm trays.
 Interior Volume (lt):380
 Power (W):285
 Voltage (V):220/240 V - I - 50/60 Hz
 Dimension (mm) : 1500x800x850

TPP-84-R**COUNTER TYPE 4-DOORS PATISSERIE REFRIGERATOR REMOTE**

Stainless steel exterior and interior body,
 Curved top plate with 6 cm backsplash,
 Patented aesthetic design,
 Wide internal volume,
 All doors with anti drop heating elements,
 Unbreakable Zamak door hinges,
 Self closing doors which can be free standing at 45°,
 "Ozone friendly" polyurethane insulation (60 mm thickness),
 Plastic coated adjustable interior shelves,
 Unoxidized, antibacterial painted, evaporator with copper pipe and aluminum panel,
 Stainless steel evaporator panel,
 Operating temperature between -2°C and +8°C (43°C tropical),
 Electronically controlled temperature and defrost indicator,
 Curved interior bottom body,
 Interior Volume (lt):780
 Voltage (V):220/240 V - I - 50/60 Hz
 Dimension (mm) : 2290x800x850

SLD 7105 HL SC**COUNTER TYPE 2 DOORS GASTRONORM SALAD REFRIGERATOR WITH COVER HIGH LEGS**

Stainless steel exterior and interior body,
 Patented aesthetic design,
 Wide internal volume,
 All doors with anti drop heating elements,
 Unbreakable Zamak door hinges,
 Self closing doors which can be free standing at 45°,
 "Ozone friendly" polyurethane insulation (50 mm thickness),
 Plastic coated adjustable interior shelves,
 Energy saving high insulated body with 40 kg/m³ density,
 CFC free, R-134 A refrigerant gas,
 Ventilated, removable compressor,
 Gas condensation container,
 Cooling with fan,
 Unoxidized, antibacterial painted, evaporator with copper pipe and aluminum panel,
 Stainless steel evaporator panel,
 Operating temperature between -2°C and +8°C (43°C tropical),
 Electronically controlled temperature and defrost indicator,
 Curved interior bottom body,
 Capacity: 6 x GN 1/4

AYDIN MAKİNE İÇİŞİTİM VE Dış İÇİŞİTİM SAN. TIC. A.Ş.
 Aydin Makine İcariyatı ve Dış İcariyatı San. Böl. Mermerciler Cad. No:41 34953 Tuzla – İstanbul / Türkiye
 Tel: +90 216 593 02 42 / Fax: +90 216 593 02 43

Interior Volume (lt):260
 Power (W):275
 Voltage (V):220/240 V - I - 50/60 Hz
 Dimension (mm) : 1380x730x2100

TPG -72 SALAD BAR**COUNTER TYPE 2 DOORS GASTRONORM SALAD REFRIGERATOR**

Stainless steel exterior and interior body,
 Patented aesthetic design,
 Wide internal volume,
 All doors with anti drop heating elements,
 Unbreakable Zamak door hinges,
 Self closing doors which can be free standing at 45°,
 "Ozone friendly" polyurethane insulation (50 mm thickness),
 Plastic coated adjustable interior shelves,
 Energy saving high insulated body with 40 kg/m³ density,
 CFC free, R-134 A refrigerant gas,
 Ventilated, removable compressor,
 Gas condensation container,
 Cooling with fan,
 Unoxidized, antibacterial painted, evaporator with copper pipe and aluminum panel,
 Stainless steel evaporator panel,
 Operating temperature between -2°C and +8°C (43°C tropical),
 Electronically controlled temperature and defrost indicator,
 Curved interior bottom body,
 Capacity: 3 x GN 1/1
 Interior Volume (lt):532
 Power (W):310
 Voltage (V):220/240 V - I - 50/60 Hz
 Dimension (mm) :1380x730x2100

TPG -73 SALAD BAR**COUNTER TYPE 3 DOORS GASTRONORM SALAD REFRIGERATOR**

Stainless steel exterior and interior body,
 Patented aesthetic design,
 Wide internal volume,
 All doors with anti drop heating elements,
 Unbreakable Zamak door hinges,
 Self closing doors which can be free standing at 45°,
 "Ozone friendly" polyurethane insulation (50 mm thickness),
 Plastic coated adjustable interior shelves,
 Energy saving high insulated body with 40 kg/m³ density,
 CFC free, R-134 A refrigerant gas,
 Ventilated, removable compressor,
 Gas condensation container,
 Cooling with fan,
 Unoxidized, antibacterial painted, evaporator with copper pipe and aluminum panel,
 Stainless steel evaporator panel,
 Operating temperature between -2°C and +8°C (43°C tropical),
 Electronically controlled temperature and defrost indicator,
 Curved interior bottom body,
 Capacity: 4 x GN 1/1
 Interior Volume (lt):532
 Power (W):310
 Voltage (V):220/240 V - I - 50/60 Hz
 Dimension (mm) :2100x730x1350

TTR-150 SC**COLD DISPLAY UNIT**

Suitable for 1/4 GN containers in industrial and domestic use. ÜRÜNLERİ SAN. TIC. A.Ş.
 Aydinlik Mahallesi Anadolu Yakası Organize San. Böl. Mermerciler Cad. No:41 34953 Tuzla – İstanbul / Türkiye
 "Ozone friendly" polyurethane insulation (50 mm thickness)
 Tel: +90 216 593 02 42 / Fax: +90 216 593 02 43

DUCT CODE

DESCRIPTIONS



Energy saving high insulated body with 40 kg/m³ density,
CFC free, R-134 A refrigerant gas,
Unoxidized, antibacterial painted, evaporator with copper pipe and aluminum panel,
Operating temperature between 4°C - +8°C
Electronically controlled temperature and defrost indicator,
Power (W):140
GN 1/4 Container:6
Dimension (mm):1496x370x450

SCR-180

**DISPLAY UNIT WITH CURVED GLASS**

Aluminum front profile
Special hygienic plastic side windows
Suitable for 1/3 - 2 cm GN containers
"Ozone friendly" polyurethane insulation
Energy saving high insulated body with 40 kg/m³ density,
CFC free, R-134 A refrigerant gas,
Unoxidized, antibacterial painted, evaporator with copper pipe and aluminum panel,
Operating temperature between 4°C - +8°C
Electronically controlled temperature and defrost indicator,
Power (W):200
GN 1/3 Container:8
Dimension (mm):1750x400x250

SCR-140

**DISPLAY UNIT WITH CURVED GLASS**

Aluminum front profile
Special hygienic plastic side windows
Suitable for 1/3 - 2 cm GN containers
"Ozone friendly" polyurethane insulation
Energy saving high insulated body with 40 kg/m³ density,
CFC free, R-134 A refrigerant gas,
Unoxidized, antibacterial painted, evaporator with copper pipe and aluminum panel,
Operating temperature between 4°C - +8°C
Electronically controlled temperature and defrost indicator,
Power (W):170
GN 1/3 Container:6
Dimension (mm):1395x400x250

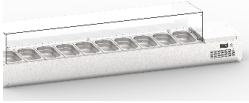
MUR-73

**COUNTER TYPE - 3 DOORS REFRIGERATED MAKE-UP UNIT-12 GN 1/4 CONTAINERS**

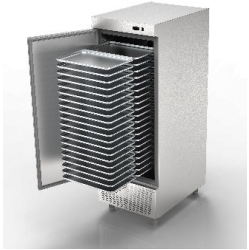
Stainless steel exterior and interior body,
Patented aesthetic design,
Wide internal volume,
All doors with anti drop heating elements,
Unbreakable Zamak door hinges,
Self closing doors which can be free standing at 45°,
"Ozone friendly" polyurethane insulation (60 mm thickness),
Plastic coated adjustable interior shelves,
Energy saving high insulated body with 40 kg/m³ density,
CFC free, R-134 A refrigerant gas,
Ventilated, removable compressor,
Gas condensation container,
Cooling with fan,
Unoxidized, antibacterial painted, evaporator with copper pipe and aluminum panel,
Independent evaporator unit between the door split,
Stainless steel evaporator panel,
Operating temperature between 2°C - +8°C (4°C Fixed point)

İNDEKS YEMEK DAĞITICILARI SAN. TIC. A.Ş.
Avni Fırat. İstanbul Anadolu Yakası. Org.San.Böl. Mermerciler Cad. No:41 34953 Tuzla – İstanbul / Türkiye
Tel: +90 216 593 02 43 Fax: +90 216 593 02 43

Electronically controlled temperature and defrost indicator,
 Curved interior bottom body,
 Copper pipe assisted extra polyurethane injected make up unit body integrated to the main refrigeration unit.
 Refrigerated tables have 1/1 GN capacity,
 Make-up unit has 1/4 GN containers (9-12 units).
 Interior Volume (lt):532
 Power (W):310
 Voltage (V):220/240 V - I - 50/60 Hz
 Dimension (mm) :2100x730x1150/1100

TTR-200 GD**COLD DISPLAY UNIT GLASS COVER**

Suitable for 1/4 GN containers up to 15 cm depth
 Stainless steel exterior and interior body,
 "Ozone friendly" polyurethane insulation,
 Energy saving high insulated body with 40 kg/m³ density,
 CFC free, R-134 A refrigerant gas,
 Unoxidized, antibacterial painted, evaporator with copper pipe and aluminum panel,
 Operating temperature between 4°C - +8°C
 Electronically controlled temperature and defrost indicator,
 Power (W):140
 GN 1/4 Container:8
 Dimension (mm):2025x370x450

CPB-101-40S**UPRIGHT PATISSERIE REFRIGERATOR 40 TRAYS - 1 FULL DOOR**

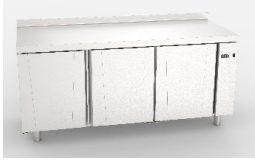
Stainless steel exterior and interior body.
 Cooling Temperature -2°C ; +8°C.
 High performance 43°C tropical conditions.
 Patented V desing.
 Wide internal volume.
 Anti drop heating resistant in the door frame
 Zamak door hinges.
 Self closing doors at 90°.
 Ozone friendly polyurethane insulation
 (50 mm thickness).
 Energy saving high insulated body with 40 kg/m³ density.
 CFC free, R-134 A refrigerant gas.
 Ventilated, removable compressor.
 Gas condensation container.
 Fan cooling.
 Electronic controlled temperature and defrost Thermostat.
 Curved interior inner body.
 Stainless steel evaporator cover.

TPS-63-H**COUNTER TYPE 3-DOORS SNACK REFRIGERATOR HIGH MODELE**

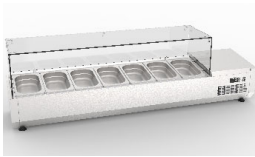
Stainless steel exterior and interior body,
 Curved top plate with 6 cm backsplash,
 Patented aesthetic design,
 Wide internal volume,
 All doors with anti drop heating resistant in the door frame.
 Zamak door hinges.
 Self closing doors which can be opened at 90°.
 Ozone friendly polyurethane insulation
 (50 mm thickness).
 Energy saving high insulated body with 40 kg/m³ density.
 CFC free, R-134 A refrigerant gas.
 Ventilated, removable compressor.
 Gas condensation container.
 Fan cooling.
 Electronic controlled temperature and defrost Thermostat.
 Curved interior inner body.
 Stainless steel evaporator cover.

heating ÜSERNİLS DAY. TÜK. ÜRÜNLERİ SAN. TIC. A.Ş.
 Aydınevler Mah. Zambaklı Cad. Dolunluk Sok. Org.San.Böl. Mermerciler Cad. No:41 34953 Tuzla – İstanbul / Türkiye
 Tel: +90 216 593 02 42 Fax: +90 216 593 02 43

"Ozone friendly" polyurethane insulation (60 mm thickness),
 Plastic coated adjustable interior shelves,
 Energy saving high insulated body with 40 kg/m³ density,
 CFC free, R-134 A refrigerant gas,
 Ventilated, removable compressor,
 Gas condensation container,
 Cooling with fan,
 Unoxidized, antibacterial painted, evaporator with copper pipe and aluminum panel,
 Stainless steel evaporator panel,
 Operating temperature between -2°C and +8°C (43°C tropical),
 Electronically controlled temperature and defrost indicator,
 Curved interior bottom body,
 Interior Volume (lt):455
 Power (W):310
 Voltage (V):220/240 V - I - 50/60 Hz
 Dimension (mm) : 2020x600x1020

TPG-73-R**COUNTER TYPE 3-DOORS GASTRONORM REFRIGERATOR REMOTE**

Stainless steel exterior and interior body,
 Curved top plate with 6 cm backsplash,
 Patented aesthetic design,
 Wide internal volume,
 All doors with anti drop heating elements,
 Unbreakable Zamak door hinges,
 Self closing doors which can be free standing at 45°,
 "Ozone friendly" polyurethane insulation (60 mm thickness),
 Plastic coated adjustable interior shelves,
 Unoxidized, antibacterial painted, evaporator with copper pipe and aluminum panel,
 Stainless steel evaporator panel,
 Operating temperature between -2°C and +8°C (43°C tropical),
 Electronically controlled temperature and defrost indicator,
 Curved interior bottom body,
 Interior Volume (lt):532
 Voltage (V):220/240 V - I - 50/60 Hz
 Dimension (mm) : 1760x700x850

TTR-150 GC**COLD DISPLAY UNIT GLASS COVER**

Suitable for 1/4 GN containers up to 15 cm depth
 Stainless steel exterior and interior body,
 "Ozone friendly" polyurethane insulation,
 Energy saving high insulated body with 40 kg/m³ density,
 CFC free, R-134 A refrigerant gas,
 Unoxidized, antibacterial painted, evaporator with copper pipe and aluminum panel,
 Operating temperature between 4°C - +8°C
 Electronically controlled temperature and defrost indicator,
 Power (W):140
 GN 1/4 Container:6
 Dimension (mm):1496x370x450

MUR-72-HL**COUNTER TYPE - 2 DOORS REFRIGERATED MAKE-UP UNIT - 9 GN 1/4 CONTAINERS,HIGH LEGS**

Stainless steel exterior and interior body,
 Patented aesthetic design,
 Wide internal volume,
 All doors with anti drop heating elements,
 Unbreakable Zamak door hinges,
 Self closing doors which can be free standing at 45°,
 "Ozone friendly" polyurethane insulation (60 mm thickness),
 Plastic coated adjustable interior shelves,
 Energy saving high insulated body with 40 kg/m³ density,
 CFC free, R-134 A refrigerant gas,
 Ventilated, removable compressor,
 Gas condensation container,
 Cooling with fan,
 Unoxidized, antibacterial painted, evaporator with copper pipe and aluminum panel,
 Stainless steel evaporator panel,
 Operating temperature between -2°C and +8°C (43°C tropical),
 Electronically controlled temperature and defrost indicator,
 Curved interior bottom body,
 Interior Volume (lt):455
 Power (W):310
 Voltage (V):220/240 V - I - 50/60 Hz
 Dimension (mm) : 2020x600x1020

IND. ENDÜSTRİYEL DAY. TÜK. ÜRÜNLERİ SAN. TIC. A.Ş.
 Aydınlı Mah. İstanbul Anadolu Yakası Örg. San. Böl. Mermerciler Cad. No:41 34953 Tuzla – İstanbul / Türkiye
 Tel: +90 216 593 02 42 / Fax: +90 216 593 02 43

CFC free, R-134 A refrigerant gas,
 Ventilated, removable compressor,
 Gas condensation container,
 Cooling with fan,
 Unoxidized, antibacterial painted, evaporator with copper pipe and aluminum panel,
 Independent evaporator units between the door split,
 Stainless steel evaporator panel,
 Operating temperature between -2°C - +8°C (43°C tropical),
 Electronically controlled temperature and defrost indicator,
 Curved interior bottom body,
 Copper pipe assisted extra polyurethane injected make up unit body integrated to the main refrigeration unit.
 Refrigerated tables have 1/1 GN capacity,
 Make-up unit has 1/4 GN containers (9-12 units).
 Interior Volume (lt):345
 Power (W):275
 Voltage (V):220/240 V - I - 50/60 Hz
 Dimension (mm) :1500x700x850/1300

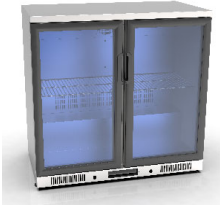
CPP-202**UPRIGHT PÂTISSERIE REFRIGERATOR - 2 FULL DOORS**

Stainless steel exterior and interior body,
 Patented aesthetic design,
 Wide internal volume,
 All doors with anti drop heating elements,
 Unbreakable Zamak door hinges,
 Self closing doors which can be free standing at 45°,
 "Ozone friendly" polyurethane insulation (60 mm thickness),
 Plastic coated adjustable interior shelves,
 Energy saving high insulated body with 40 kg/m³ density,
 CFC free, R-134 A refrigerant gas,
 Ventilated, removable compressor,
 Gas condensation container,
 Cooling with fan,
 Bottom located, high efficient cooling unit,
 Unoxidized, antibacterial painted, evaporator with copper pipe and aluminum panel,
 Stainless steel evaporator panel,
 Operating temperature between -2°C and +8°C (43°C tropical),
 Electronically controlled temperature and defrost indicator,
 Curved interior bottom body,
 Capacity:40x60 cm trays.
 Interior Volume (lt):1450
 Power (W):700
 Voltage (V):220/240 V - I - 50/60 Hz
 Dimension (mm) :1380x930x2100

GDC-150-SS**BOTTLE COOLER**

Plastic-coated white galvanized inner surface,
 Aluminium frame and interior lighting
 Double glazed, vacuumed doors, and stainless coated, adjustable inner steel shelves,
 "Ozone friendly" polyurethane insulation (60 mm thickness),
 Plastic coated black outer surface,40kg/m³ density,
 Ventilated, removable compressor,
 CFC free, R-134 A refrigerant gas,
 Cooling with fan,
 Evaporator with copper pipe and aluminum panel,
 Automatic water evaporation after defrosting,
 Electronically controlled temperature and defrost indicator,
 Operating temperature between -2°C and +8°C (43°C tropical),
 Interior Volume (lt):1450
 Power (W):700
 Voltage (V):220/240 V - I - 50/60 Hz
 Dimension (mm) :1380x930x2100

Door:1
Shelf:2
Capacity (bottle):135
Power (W):185
Dimension (mm) :600x520x900

GDC-250-SS**BOTTLE COOLER**

Plastic-coated white galvanized inner surface,
Aluminium frame and interior lighting
Double glazed, vacuumed doors, and stainless coated, adjustable inner steel shelves,
"Ozone friendly" polyurethane insulation (60 mm thickness),
Plastic coated black outer surface,40kg/m³ density,
Ventilated, removable compressor,
CFC free, R-134 A refrigerant gas,
Cooling with fan,
Evaporator with copper pipe and aluminum panel,
Automatic water evaporation after defrosting,
Electronically controlled temperature and defrost indicator,
4 shelves for each model, Electric: 230 V-1 +N -50 and 60 Hz,
Operating temperature between +2°C and +6°C (43°C tropical),
Door:2
Shelf:4
Capacity (bottle):190
Power (W):250
Dimension (mm) :900x520x900

GDC-350-SS**BOTTLE COOLER**

Plastic-coated white galvanized inner surface,
Aluminium frame and interior lighting
Double glazed, vacuumed doors, and stainless coated, adjustable inner steel shelves,
"Ozone friendly" polyurethane insulation (60 mm thickness),
Plastic coated black outer surface,40kg/m³ density,
Ventilated, removable compressor,
CFC free, R-134 A refrigerant gas,
Cooling with fan,
Evaporator with copper pipe and aluminum panel,
Automatic water evaporation after defrosting,
Electronically controlled temperature and defrost indicator,
4 shelves for each model, Electric: 230 V-1 +N -50 and 60 Hz,
Operating temperature between +2°C and +6°C (43°C tropical),
Door:3
Shelf:6
Capacity (bottle):295
Power (W):300
Dimension (mm) :1350x520x900

GDC-150-PT**BOTTLE COOLER**

Painted outer surface, stainless inner surface
Interior lighting,
Double glazed, vacuum door, stainless coated, adjustable steel inner shelves,
30 mm thick 'Ozone friendly' polyurethane insulation,
Stainless outer surface, 40kg / m³ density,
Ventilated removable compressor

INDEN ENDS TRİMEL DAYIYORUNLERI SAN. TIC. A.Ş.
Aydin Mah. İstanbul Anadolu Yakası Örg. San. Böl. Mermerciler Cad. No:41 34953 Tuzla – İstanbul / Türkiye
Tel: +90 216 593 02 42 / Fax: +90 216 593 02 43



CFC-free environment friendly R-134A refrigerant,
Fan system cooling,
Copper tube, aluminum panel evaporator,
Automatic water evaporation after defrost,
Electronic temperature and defrost controlled indicator,
Electricity: 230 V -1 + N -50 and 60 Hz,
Working range -2 ° Between C and + 6 ° C (+ 43 ° C in tropical conditions),
Capacity (bottle): 135
Power (W): 185
Size (mm): 600x520x900

GDC-250-PT**BOTTLE COOLER**

Painted outer surface, stainless inner surface
Interior lighting,
Double glazed, vacuum door, stainless coated, adjustable steel inner shelves,
30 mm thick 'Ozone friendly' polyurethane insulation,
Stainless outer surface, 40kg / m³ density,
Ventilated removable compressor,
CFC-free environment friendly R-134A refrigerant,
Fan system cooling,
Copper tube, aluminum panel evaporator,
Automatic water evaporation after defrost,
Electronic temperature and defrost controlled indicator,
Electricity: 230 V -1 + N -50 and 60 Hz,
Working range -2 ° Between C and + 6 ° C (+ 43 ° C in tropical conditions),
Capacity (bottle): 190
Power (W): 250
Size (mm): 900x520x900

GDC-350-PT**BOTTLE COOLER**

Painted outer surface, stainless inner surface
Interior lighting,
Double glazed, vacuum door, stainless coated, adjustable steel inner shelves,
30 mm thick 'Ozone friendly' polyurethane insulation,
Stainless outer surface, 40kg / m³ density,
Ventilated removable compressor,
CFC-free environment friendly R-134A cooling gas,
Fan system cooling,
Copper tube, aluminum panel evaporator,
Automatic water evaporation after defrost,
Electronic temperature and defrost controlled indicator,
Electricity: 230 V -1 + N -50 and 60 Hz,
Working range -2 ° Between C and + 6 ° C (+ 43 ° C in tropical conditions),
Capacity (bottle): 295
Power (W): 300
Size (mm): 1350x520x900

DUCT CODE**DESCRIPTIONS**

Stainless steel exterior and interior body,
Patented aesthetic design,
Wide internal volume,
All doors with anti drop heating elements,
Unbreakable Zamak door hinges,
Self closing doors which can be free standing at 45°,
"Ozone friendly" polyurethane insulation (50 mm thickness),
Plastic coated adjustable interior shelves,
Energy saving high insulated body with 40 kg/m³ density,
CFC free, R-134 A refrigerant gas,
Ventilated, removable compressor,
Gas condensation container,
Cooling with fan,
Unoxidized, antibacterial painted, evaporator with copper pipe and aluminum panel,
Stainless steel evaporator panel,
Operating temperature between -2°C and +8°C (43°C tropical),
Electronically controlled temperature and defrost indicator,
Curved interior bottom body,
Capacity: 6 x GN 1/4
Interior Volume (lt):260
Power (W):275
Voltage (V):220/240 V - I - 50/60 Hz
Dimension (mm) : 1380x730x2100